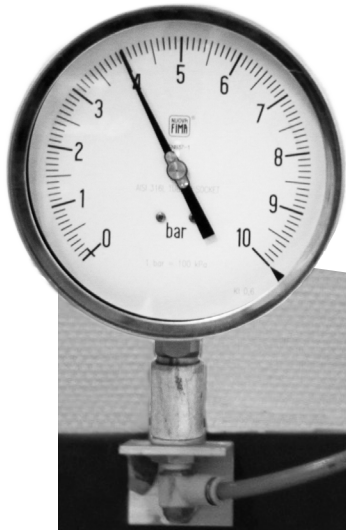


PRESSALIT®  
care



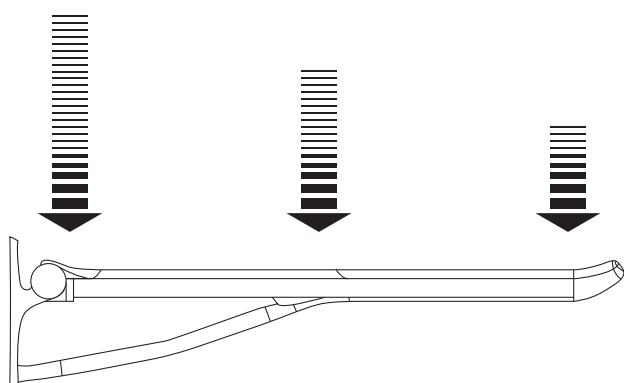
# Meeting bariatric needs

Methods of testing for maximum loads

# Methods of testing for maximum loads

At Pressalit Care we test our products so we can be completely sure that they can withstand even extreme real-life conditions. We push the products to the very limit to identify any weaknesses by subjecting them to rigorous tests. Therefore, we can guarantee the values we provide. The products comply with the requirements in DS/EN 12182:2012

For example, the illustration below shows our test method for a support arm. The load which the product can withstand increases the further back on the support arm one tests it. However, we have decided to state the lowest values, which means that the lifespan of the product is even longer in use, as the load is often applied closer to the wall.



All tests have been conducted by mounting the products on a solid wall, which is what Pressalit Care recommends. The lifespan of the product is not affected in any way by the wall type. However, the overall solution will inevitably be influenced by the condition and material of the wall, so reinforcement should always be used if the wall is not stable. See also <http://us.pressalit.com/for-professionals/assisted-bathrooms/test-methods>



## Dynamic test

We test the products dynamically by subjecting them vertically 10,000 times to a load lasting 2 seconds. The weight specifications on our products state how many pounds the products can withstand at their outermost points using this test method.



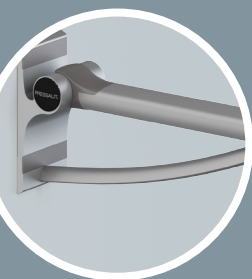
## Static test

We also conduct a static test on our products, and we therefore know exactly how many pounds each product can carry for 1 minute. The statistical test is also carried out on the weakest part of each product.



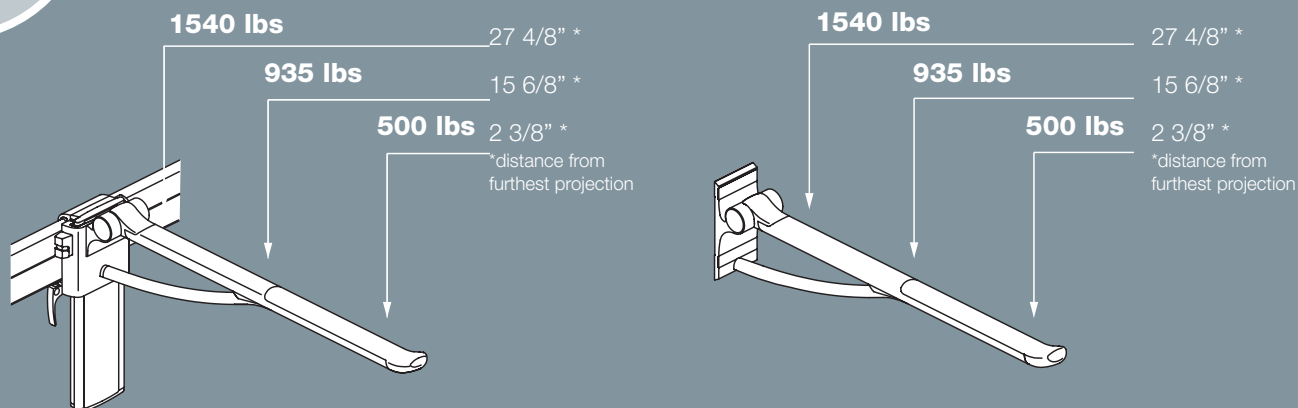
## Lateral test

In addition to the above testing methods, we subject our support arms and armrests to a lateral test to find out whether they can withstand being used by, e.g., a wheelchair user when moving himself. The lateral test involves pressing the product 10,000 times at a 45° angle for 2 seconds at a time.



## Support arms

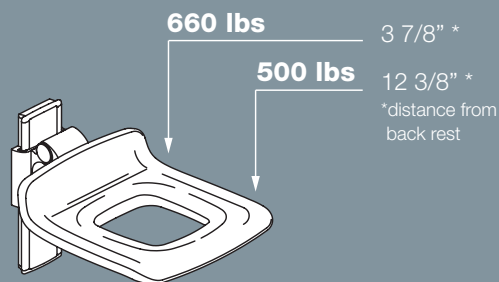
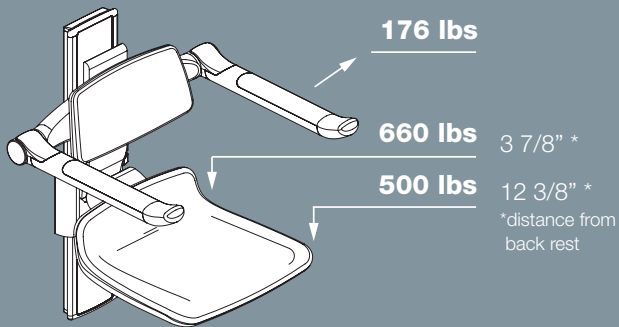
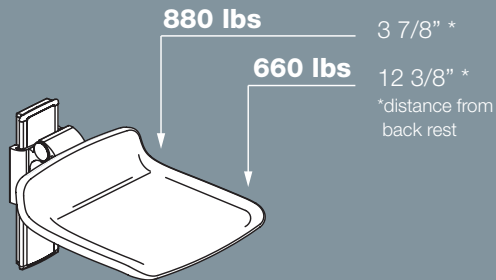
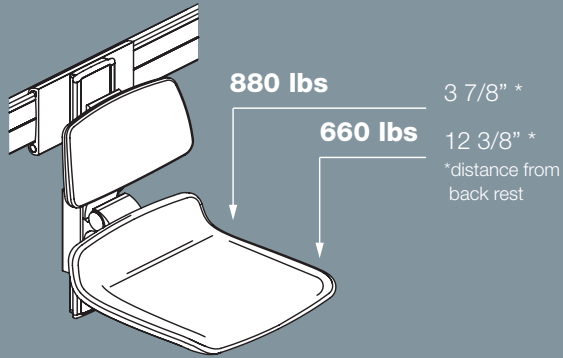
Model R3060 - R3585 + RF060 - RF585



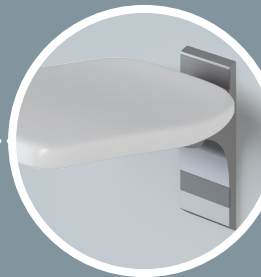
## Shower seats 310 + 450



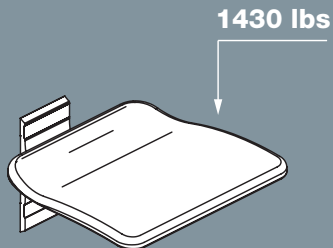
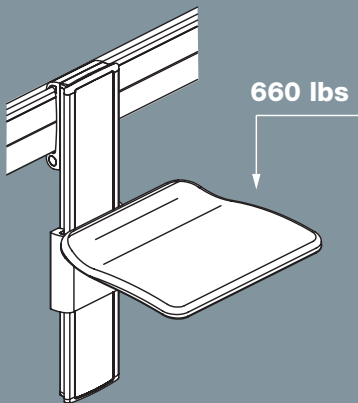
Model R7310 - R7481. Electrically operated shower seats have a maximum load of 330 lbs during height adjustment.



## Folding seats



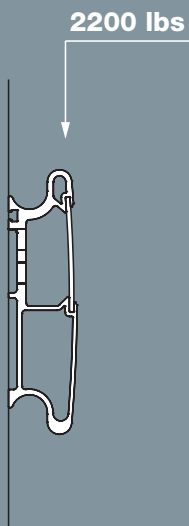
Model R5510 - R5530



## Wall tracks



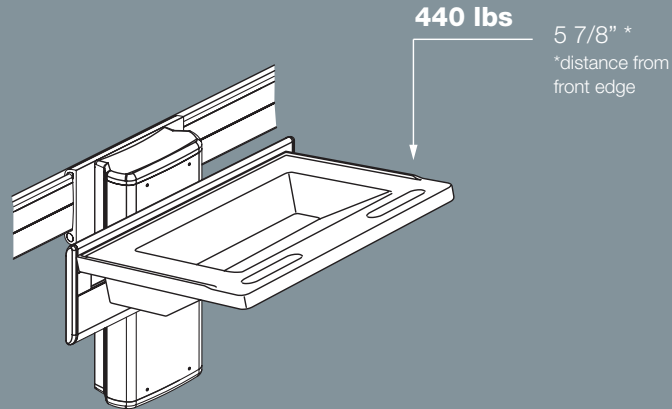
Model R9806 - R9839





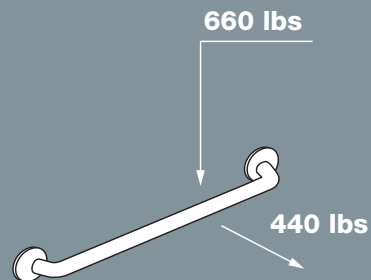
## Sink brackets

Model R4550 - R4782. Electrically operated sink brackets have a maximum load of 220 lbs during height adjustment



## Grab bars

Model RT018 - RT042



Go to test site



**Pressalit A/S**  
Pressalitvej 1  
8680 Ry  
Denmark, Europe  
Tel.: +45 8788 8989  
Fax: +45 8788 8669  
E-mail: dk@pressalit.com

**Pressalit Inc. North America**  
51 Forest Hills Drive  
P.O. Box 1624  
East Dennis, MA 02641  
USA  
Tel.: 508 364 3804  
E-mail: us@pressalit.com  
www.pressalit.com