



PLUS - the flexible  
bathroom



# The three areas of the bathroom

*The key to a functional bathroom is a systematic evaluation of the room's potential taking into consideration the end user and caregiver's needs. An evaluation needs to be made of space requirements, turning areas, and the typical turning radius at the washing, toileting and showering areas of the bathroom.*

**WASHING** Having the correct height to the sink can be critical to many people. The sink bracket is ideal if many people share the same sink. Users who need to sit or stand have the best opportunity to be independent - and thus achieve greater dignity and satisfaction - when the sink can be adjusted to the correct height at all times.

**THE TOILET AREA** Using support arms which are both vertically as well as horizontally adjustable enables different users to find the proper support when using the toilet. The length and stability of the support arms provide security during transfers to and from the toilet.

**THE SHOWER AREA** A high degree of flexibility is the key when designing a functional bathroom. Using a shower seat which is both vertically and horizontally adjustable means that good working height can be obtained for the caregiver while the user sits in the chair. Adding a hand and shower rail corner with a shower faucet bracket means that both right as well as lefthanded users' needs can be accommodated. The chair can be used to create space for user as well as caregiver.

*Contact us, if you have questions or need inspiration and guidance in your process of planning your next functional bathroom.*









# A world of color





The flexibility of the PLUS system is also reflected in the wide choice of colors available. Thanks to the variety of both subtle and intense colors, it is easy to choose exactly the right color combinations to suit the bathroom's main purpose while satisfying user needs for an aesthetic and plainly laid-out design.

Colors can help to add a uniquely personal and individual feel while also assisting the user to find their way around in relation to the bathroom's various functions. As in traffic, colors in the bathroom can provide direction and function as signals.

Using color contrasts provides an important and invaluable help with daily routines, especially for many older and visually impaired people.

**Wall tracks**  
- Standard colors



182 PALE GREY



112 ANTHRACITE

**Support arms and shower seats**  
- Standard colors



000 WHITE



112 ANTHRACITE

**Support arms and shower seats**  
- Special colors



282 PALE UMBER



279 PALE BLUE



108 DARK BLUE



277 LIME GREEN



026 ORANGE



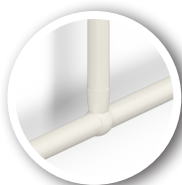
035 RED



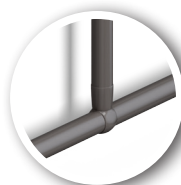
289 PURPLE

**Handrails, shower head holder and shower curtain rails**

- Standard colors



000 WHITE



112 ANTHRACITE

- Special colors



035 RED



108 DARK BLUE

**Toilet seats and folding seats**

- Standard colors



000 WHITE



112 ANTHRACITE

- Special colors



035 RED



108 DARK BLUE

NCS Color codes

000 = S0502-Y  
026 = S1080-Y60R  
035 = S4050-R  
108 = S8010-R70B  
112 = S6500-N  
182 = S3000-N  
277 = S1075-G50Y  
279 = S1020-R90B  
289 = S4050-R50B

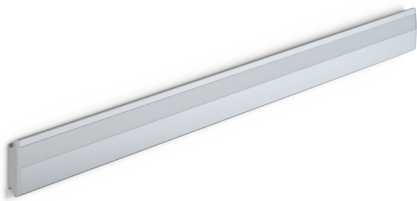


# Unlimited possibilities

Design and function go hand in hand in the wall track, which is the backbone of the flexible PLUS system.

Horizontal track makes it possible to move the products along the wall, while vertical track enables adjustment of their height. Changing the position of the products can be done without the use of tools. If the two tracks are combined, the available space in the bathroom can be utilised optimally, benefiting both user and caregiver.

If one or more products are not needed for a period of time, they can easily be removed from the track. The philosophy behind the flexible, intuitive bathroom is that the room should be tailored to the users and not the other way around.



## Horizontal wall track

**R9827yyy** Wall track, 106 2/8"

The track is available in various lengths.

Materials: Aluminium, plastic  
 Max. load: Dependent on wall construction - a vertical load up to 2200 lbs  
 yyy: Color of frontplate for track



## Vertical wall track

**R9864yyy** Vertical wall track for height-adjustable products, 15 6/8"

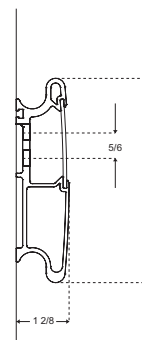
**R9866yyy** Vertical wall track for height-adjustable products, 23 5/8"

Materials: Aluminium, plastic  
 Max. load: Dependent on wall construction - a vertical load up to 2200 lbs kg  
 yyy: Color of frontplate for track

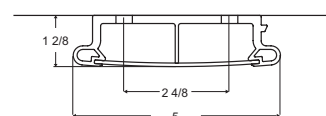




A horizontal wall track allows for a flexible room layout. The track makes it possible to move the products sideways to suit spacial requirements and care needs.



A vertical track makes it possible to adjust the products to a suitable height for the benefit of carers and users alike.



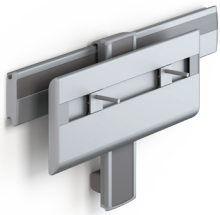


# Washing



## ⊕ Height-adjustable sink bracket

- R4752**      Electrically operated sink bracket with wireless remote control
  - R4751**      Electrically operated sink bracket with wired hand control
  - R4750**      Electrically operated sink bracket with lever control
  - ◀ **R4650**      Air-assisted sink bracket with lever control
- Materials:      Aluminium, plastic



## ⊕ Height-adjustable sink bracket

- R4580yyy**      Manually operated sink bracket with lever control
- Materials:      Aluminium, plastic  
 yyy:              Color of frontplate for track



## MATRIX Sinks

- R2020000**      Sink with handrails and overflow  
 MATRIX Small is a narrow sink with two integrated handrails in the front.
  - R2030000**      Large Sink with storage surface, handrails and overflow  
 MATRIX Large has two integrated handrails on the front edge and two handrails at the sides.
  - ◀ **R2040000**      Angled Sink with storage surface, handrails, overflow, right-facing
  - R2042000**      Angled Sink with storage surface, handrails, overflow, left-facing  
 MATRIX Angle has two integrated handrails in the front.
- Material:              Crushed marble with a high-gloss, non-porous sanitation coating



## Sink faucet

- RT622**              Faucet, long rotatable spout  
 The ring-shaped operating lever is suitable for disabled users.
- Material: Chromium-plated brass



P. 3

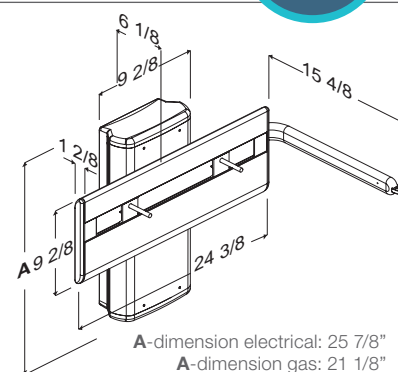
← COLORS

With the sink bracket mounted at the recommended height, the height of the sink can be adjusted by 11 6/8" from 26 2/8" to 38 1/8" above floor level.

R4650 is supplied with a air cylinder for sinks weighing 35 - 48 lbs as standard. However, it is possible to order R4650 with cylinders for sinks weighing 17 - 26 lbs and 26 - 35 lbs.

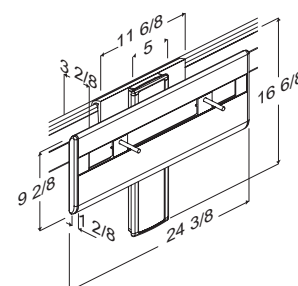
Its rounded, sleek design makes cleaning easy. The sink bracket suits most types of bolt-mounted sinks.

Height-adjustable sink brackets require a flexible feed and waste system, R2061. For further information see [www.pressaliticare.com](http://www.pressaliticare.com)



With the horizontal wall track mounted at the recommended height, the height of the sink can be adjusted by 9 4/8" from 2 6/8" to 36 2/8" above floor level.

Height-adjustable sink brackets require a flexible feed and waste system, R2061. For further information see [www.pressaliticare.com](http://www.pressaliticare.com)



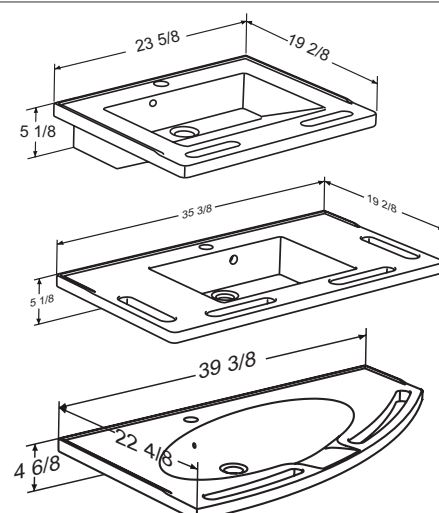
MATRIX Small has a flat bottom, leaving room for the user's legs underneath. It is ideal for bathrooms where the available space has to be efficiently utilised.

MATRIX Large a large sink designed for bathroom with plenty of space. The sink has a flat bottom, allowing wheelchair users to manoeuvre right underneath.

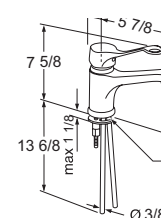
MATRIX Angle is designed so the sink can be positioned close to the toilet, while leaving a spacious work area for a helper. The sink is also ideal for mounting in a corner. The sink has a front drip tray to prevent water dripping onto the user. MATRIX Angle can only be mounted with either fixed brackets (R2010000) or manually adjustable brackets (R2015000).

All three sinks has raised edges, preventing water from running over the back or sides of the sink.

Tap hole: Ø 1 3/8"

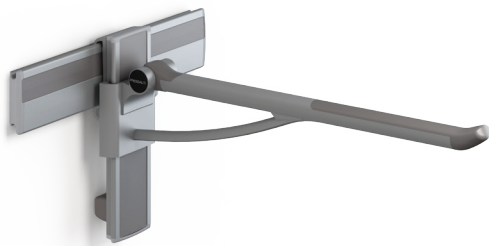


The long rotatable spout on RT622 makes it easier for seated users to reach the water and the spout can always be pushed to one side, if it is in the way. The symbols for hot and cold water are visible to both seated and standing users.





# The toilet area



## ⊕ Height-adjustable support arms for wall track

- ◀ **R3585yyyxxx** Support arm, length 33 4/8"
- R3560yyyxxx** Support arm, length 23 5/8"
- RF585yyyxxx** Support arm, counterbalanced, length 33 4/8"
- RF560yyyxxx** Support arm, counterbalanced, length 23 5/8"

Materials: Aluminium, plastic, two-component plastic  
 Max. load: 330 lbs  
 yyy: Color of frontplate for track  
 xxx: Color of support arm



## ⊕ Height-adjustable support arms

- ◀ **R3185yyyxxx** Support arm, length 33 4/8"
- R3160yyyxxx** Support arm, length 23 5/8"
- RF185yyyxxx** Support arm, counterbalanced, length 33 4/8"
- RF160yyyxxx** Support arm, counterbalanced, length 23 5/8"

Materials: Aluminium, plastic, two-component plastic  
 Max. load: 330 lbs  
 yyy: Color of frontplate for track  
 xxx: Color of support arm

## Paper holder

- R9321** Toilet paper holder for fitting under the support arm



## Flush button

- R9342** Flush button for large and small flush

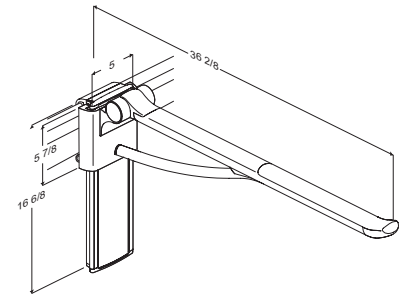


Ergonomically shaped support arms provide a sense of security for seated users while also facilitating the task of transferring to and from wheelchairs. Support arms mounted on both horizontal and vertical wall tracks ensure maximum flexibility in relation to individual user needs for space and support.

The end of the support arm offers good support when sitting down or getting up. The non-slip surface ensures a firm yet comfortable grip.

Folding support arms create more space in the room by folding away when not in use.

With the horizontal wall track mounted at the recommended height, the height of the support arm can be adjusted by 9 4/8" from 25 3/8" to 34 7/8" above the floor level.

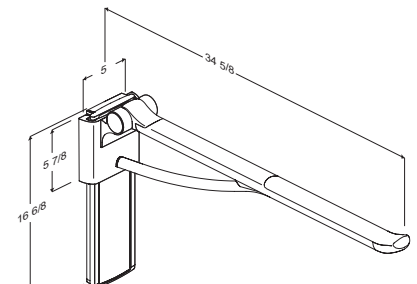


Ergonomically shaped support arms provide a sense of security for seated users while also facilitating the task of transferring to and from wheelchairs. Height adjustment makes it possible to raise or lower the support arms to provide the greatest possible support and comfort to the individual user.

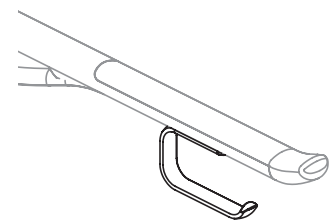
The end of the support arm offers good support when sitting down or getting up. The non-slip surface ensures a firm yet comfortable grip.

Folding support arms create more space in the room by folding away when not in use.

With the vertical wall track mounted at the recommended height, the height of the support arm can be adjusted by 9 4/8" from 25 3/8" to 34 7/8" above the floor level.

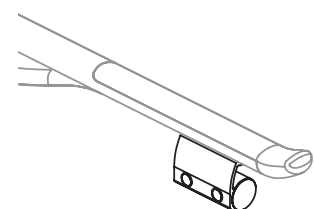


A paper holder mounted directly under the support arm ensures that the toilet paper is always within easy reach.



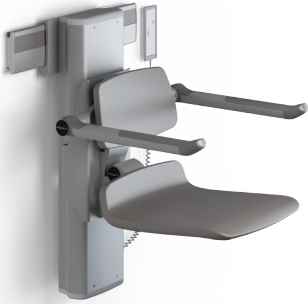
Push-button operation for remote control of flush function.

The flush button can be mounted directly underneath the support arm and functions with selected Geberit built-in cisterns.





# The shower area



## Height-adjustable shower seat 450

**R7480xxx** Electrically operated shower seat with backrest and armrest inc. wired hand control

Material: Aluminium, soft PUR foam with marine plywood core, plastic, two-component plastic

Max. load **Seat:** 330 lbs **Armrest:** 99 lbs

xxx: Color of shower seat, back- and armrest



## Height-adjustable shower seat 310

**R7320yyyxxx** Manually adjusted shower seat with backrest and armrest

Material: Aluminium, soft PUR foam with marine plywood core, plastic, two-component plastic

Max. load **Seat:** 330 lbs **Armrest:** 99 lbs

yyy: Color of frontplate for track

xxx: Color of shower seat, back- and armrest



## Fixed shower seat 310

**R7310xxx** Shower seat

Material: Aluminium, soft PUR foam with marine plywood core, plastic, two-component plastic

Max. load 330 lbs

xxx: Color of shower seat



## Handrail combination

**RT144xxx** Handrail combination

Material: Powder-coated aluminium, plastic

Max. load 330 lbs

xxx: Color of handrail

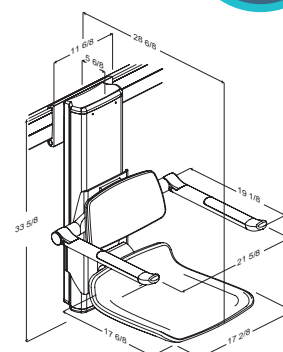
P. 3

← COLORS

With the horizontal wall track mounted at the recommended height, the height of the shower seat can be adjusted by 19 5/8" from 7 7/8" to 27 4/8" above floor level.

The shower seat is made from soft, non-slip materials which make bathing a pleasant and safe experience. Both the seat and the armrests can be folded up against the wall after use, creating space for standing users.

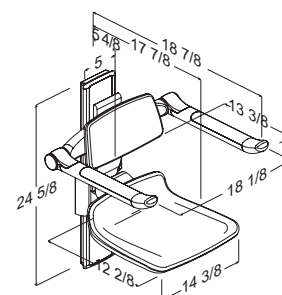
The seat, backrest and armrest can be adjusted simultaneously thanks to the wired hand control or wireless remote control. The armrests can also be adjusted independently of the seat and backrest.



With the vertical wall track mounted at the recommended height, the height of the shower seat can be adjusted by 7 5/8 mm from 13 6/8 to 21 4/8 mm above floor level.

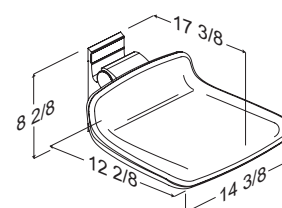
The shower seat is made from soft, non-slip materials which make bathing a pleasant and safe experience. Both the seat and the armrests can be folded up against the wall after use, creating space for standing users.

The seat, backrest and armrests can be adjusted simultaneously thanks to a safe and easy click system. The armrest can also be adjusted independently of the seat and backrest.

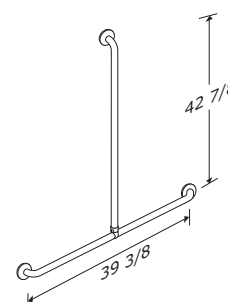


Mounted at the recommended height, the height of the shower seat will be 15 6/8" above floor level.

The shower seat is made from soft, non slip materials which make bathing a pleasant and safe experience. The seat can be folded up against the wall after use, creating space for standing users.



A handrail combination mounted by the shower provides both support, giving a sense of security and increased independence, as well as functions as a shower riser rail when mounting the shower head holder on the vertical handrail.





# Taking a shower



## Shower head holder

**RT600xxx** Shower head holder for vertical handrail

Materials: Powder-coated aluminium, anodised aluminium, plastic  
xxx: Color of shower head holder

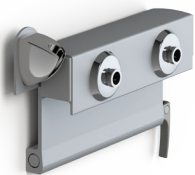


## Shower head

**RT610** Shower head, one spray mode

◀ **RT611** Shower head, three spray modes (standard, soft, massage)

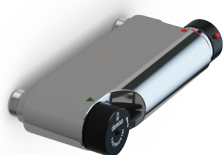
Material: Aluminium, plastic



## Shower mixer bracket

**RT760** Shower mixer bracket for mounting on horizontal wall track

Material: Aluminium, plastic



## Shower mixer

◀ **RT640** Shower mixer with thermostat

**RT760** Shower mixer with thermostat and extra long handles

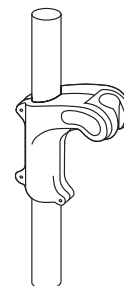
Material: Aluminium, plastic

P. 3

COLORS

By mounting a shower head holder RT600 on the vertical handrail one may benefit from the support of the handrail in the shower corner and get the use of the one-hand operated shower head holder as well.

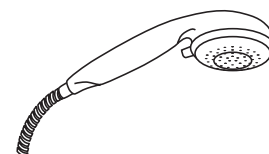
The shape of the shower head holder and the locking system facilitate height adjustment - even for weak hands. Thanks to the click system, the angle of the hand shower - and thereby the stream of water - can easily be adjusted as desired.



The curved shape of the handle and the weight balance between the head and handle make the shower head suitable for weak hands.

An adjustment ring makes it easy to change the spray mode. The silicone spray jets are easy to keep free of calcium.

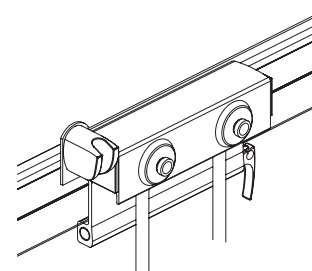
A 78 6/8" shower hose and swivel joints allow the shower head to be used over a large radius.



The shower mixer bracket is compatible with all mixer taps that comply with ordinary plumbing standards.

47 2/8" feed hoses included. The holder for the hand shower can be mounted on the left or right as required.

The moveable shower mixer bracket makes it possible to position the hand shower and mixer tap as required. Outside the shower zone, the unit can be used beside the sink for washing hair or at the toilet as a bidet function.

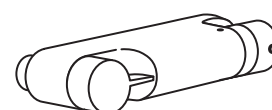


User-friendly operating handles in contrasting black, which are easy to see against the chrome mixer.

The extra long handles on the RT641 are made of grey-colored plastic.

Should protection prevents unintended water temperatures exceeding 100.4°F. The shower mixer is heat-insulated.

Can be mounted on shower mixer bracket RT760.





# PRESSALIT® CARE

*Reduced functionality need not limit a person's independence. For more than 35 years, the keep living philosophy has been a guiding principle for Pressalit Care's development of flexible kitchen and bathroom solutions for people with disabilities.*

*Thanks to its research-based knowledge, Pressalit Care is a market leader within specialist kitchen and bathroom solutions and today provides consultancy to customers worldwide.*

*An underlying respect for the individual and his or her possibilities is also reflected in the company's relationship to society at large and the local community. At Pressalit, Corporate Social Responsibility (CSR) is deeply rooted in the company's strategy and values and guides all parts of the organisation.*

*Pressalit Care's head office is located in Denmark.*

**[www.pressalit.com](http://www.pressalit.com)**

**Pressalit A/S**  
Pressalitvej 1  
8680 Ry  
Danmark  
Tel.: +45 8788 8788  
Fax: +45 8788 8789  
E-mail: [pressalit@pressalit.com](mailto:pressalit@pressalit.com)

**International Sales Department**  
Pressalitvej 1  
8680 Ry  
Danmark  
Tel.: +45 8788 8777  
Fax: +45 8788 8669  
E-mail: [sales@pressalit.com](mailto:sales@pressalit.com)

**Pressalit Inc. North America**  
51 Forest Hills Drive  
P.O. Box 1624  
East Dennis  
MA 02641  
USA  
Tel.: 508 364 3804  
E-mail: [pressalitinc@pressalit.com](mailto:pressalitinc@pressalit.com)



Scan to see  
campaign website

