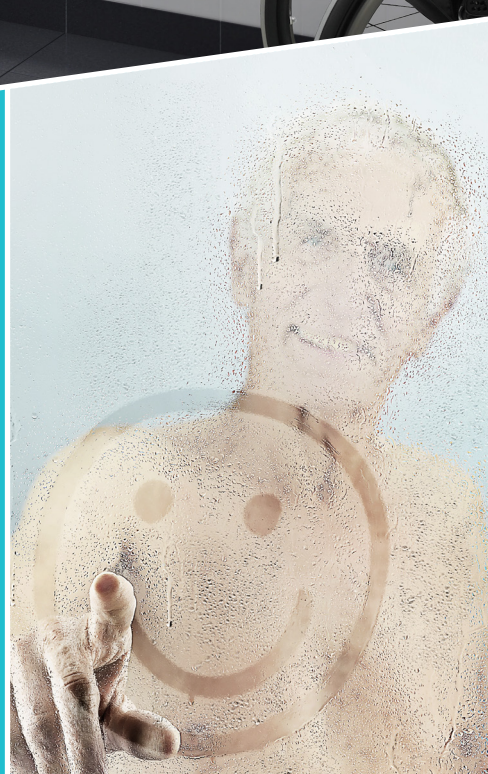




NURSING BENCHES

A flexible approach to
changing situations



Nursing Benches

series 3000 - 2000 - 1000

Pressalit Care offers a range of high quality, fixed or power adjusted nursing benches designed to provide a stable platform suitable for changing adults and children in a variety of settings: schools, day care centres, institutions, hospitals and private homes.

- ▮ All the nursing benches are made of materials which are robust and resistant to cleaning agents.
- ▮ The design of the products takes account of current ergonomic and hygiene requirements while ensuring high standards of user comfort.
- ▮ The designs are thoroughly tested and solid, and will withstand many years of daily use.

Respect and the right of the individual to a good life in spite of disability forms the cornerstone of the Pressalit Care philosophy, as summarised by the following words:

keep living





Contents

Nursing Bench 3000 Page 4

Nursing Bench 2000 Page 6

Nursing Bench 1000 Page 8

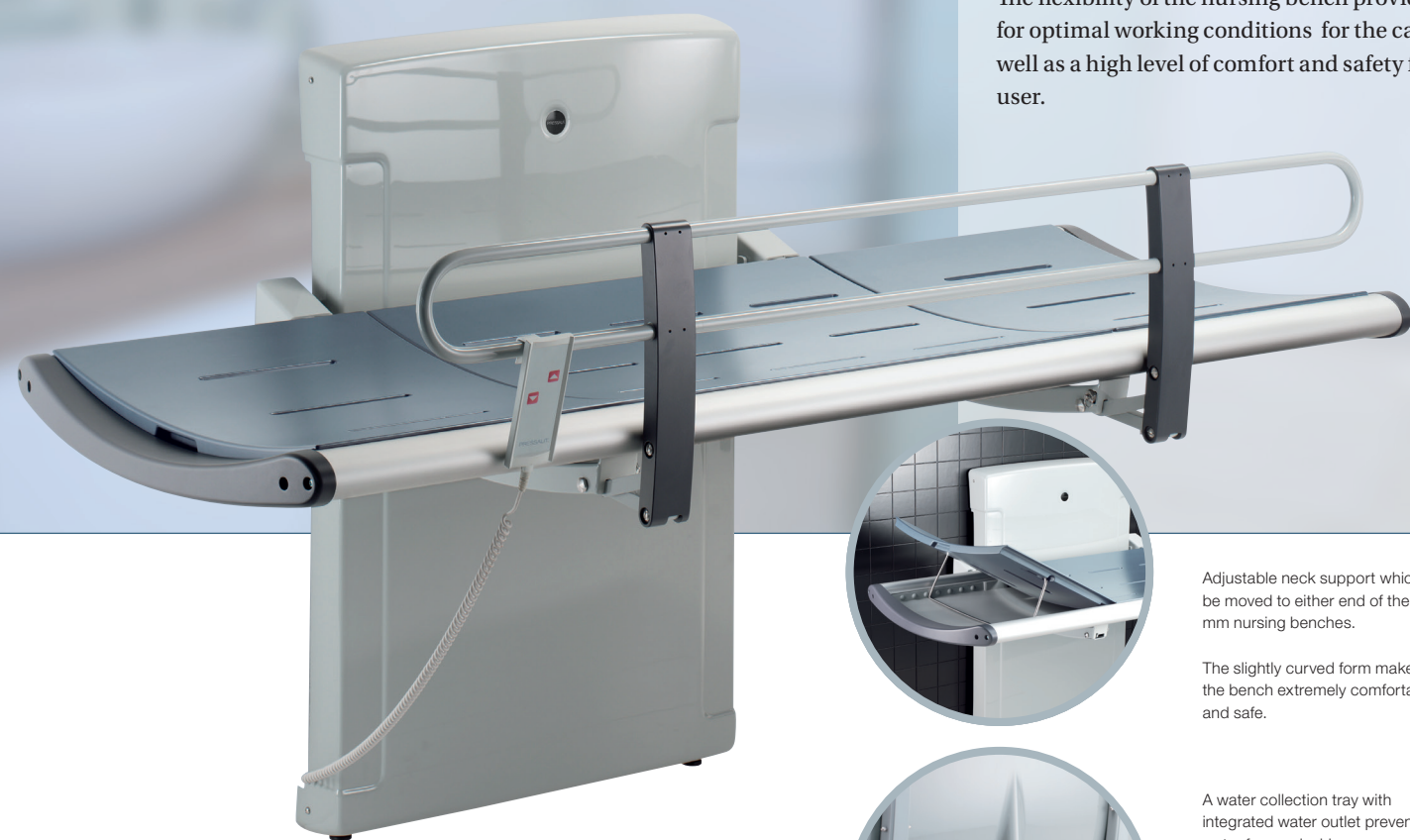
Dimensioned drawings Page 10

Mounting and accessories Page 11

Nursing Bench 3000

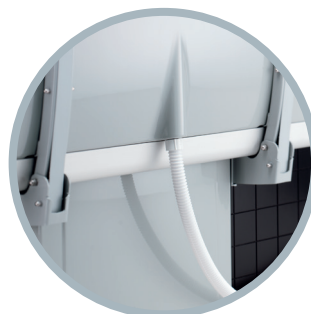
The nursing bench 3000 series provides for maximum safety and comfort. Besides an award winning design, the series includes comfortable and durable surfaces, including polyurethane foam and aluminum.

The flexibility of the nursing bench provides for optimal working conditions for the carer as well as a high level of comfort and safety for the user.



Adjustable neck support which can be moved to either end of the 1800 mm nursing benches.

The slightly curved form makes the bench extremely comfortable and safe.



A water collection tray with integrated water outlet prevents water from splashing on carers or the floor.

The flexible hose attached to the centre mounted outlet of the water collection tray, can be connected to either an outlet in the floor or on the wall.



The safety rail can be folded easily up or down.

The integrated gas cylinders enable the bench to be folded out of the way when not in use to maximise floor space.



2008



Winner
The Danish Design Prize 2007

Materials: Aluminium, polyurethane foam, plastics, powder-lacquered steel
Maximum load: 200 kg/440 lbs
Colour: 021 Lead grey



Nursing bench - adjustable height

- ◀ **R8520021** 1800 mm/70", 700 mm/28" height adjustable, electric motor
- R8516021** 1300 mm/50", 700 mm/28" height adjustable, electric motor
- R8539021** 1800 mm/70", 700 mm/28" height adjustable, electric motor and safety rail
- R8534021** 1300 mm/50", 700 mm/28" height adjustable, electric motor and safety rail

When mounted at the recommended height, the height of the nursing bench can be adjusted from 300 mm/12" to 1000 mm/40" above floor.

If safety rail is to be pre-mounted, please be sure to indicate the correct item number when ordering.

Incl. wired hand control and flexible hose, 1500 mm/60".



Nursing bench - fixed height

- ◀ **R8508021** 1800 mm/70"
- R8503021** 1300 mm/50"
- R8528021** 1800 mm/70", safety rail
- R8523021** 1300 mm/50", safety rail

When mounted at the recommended height, the lying surface height is 865 mm/34" above floor.

If safety rail is to be pre-mounted, please be sure to indicate the correct item number when ordering.

Incl. flexible hose, 1500 mm/60".



Safety rail

- ◀ **R8511** Length 1636 mm/64", for retro-fitting on nursing benches R8508021 and R8520021
- R8510** Length 1200 mm/47", for retro-fitting on nursing benches R8503021 and R8516021

Provides safety for the user.

Can easily be folded up or down.

Nursing Bench 2000



The nursing bench 2000 has a low starting height for easy transfer onto the bench as well as a perforated stretcher, which enables the water to pass through to the collection tray underneath.

The flexibility of the height adjustable nursing bench gives advantages to both the user and the carer, as the correct working height is equally important for the carer's safety and the user's comfort.



Electric with wired hand control – the red buttons clearly indicate "Up" and "Down". The wired hand control comes with a holder for fitting to the wall.



A water collection tray with integrated water outlet prevents water from splashing on carers or the floor.

The flexible hose attached to the centre mounted outlet of the water collection tray, can be connected to either an outlet in the floor or on the wall.

The integrated gas cylinders enable the bench to be folded out of the way when not in use to maximise floor space in front of the unit.



The stretcher of the bench is very easy to clean, and the stretcher cover can be unzipped for washing or easy replacement.

Materials: The frame is made from powder-lacquered stainless steel, the laying surface is a mesh cover. The water collection tray is made from polystyrene.

Maximum load: 175 kg/385 lbs

Colour: 000 White



Nursing bench - adjustable height

- ◀ **R8468000-93** Electric nursing bench, 1800 mm/70"
- R8478000-93** Electric nursing bench with safety rail, 1800 mm/70"

When mounted at the recommended height, the height of the nursing bench can be adjusted from 300 mm/12" to 1000 mm/40" mm above floor.

If safety rail is to be pre-mounted, please be sure to indicate the correct item number when ordering.

Incl. wired hand control and flexible hose, 1500 mm/60".



Safety rail

- RB2290** Length 1600 mm/63", for retro-fitting on nursing bench R8568000-93.

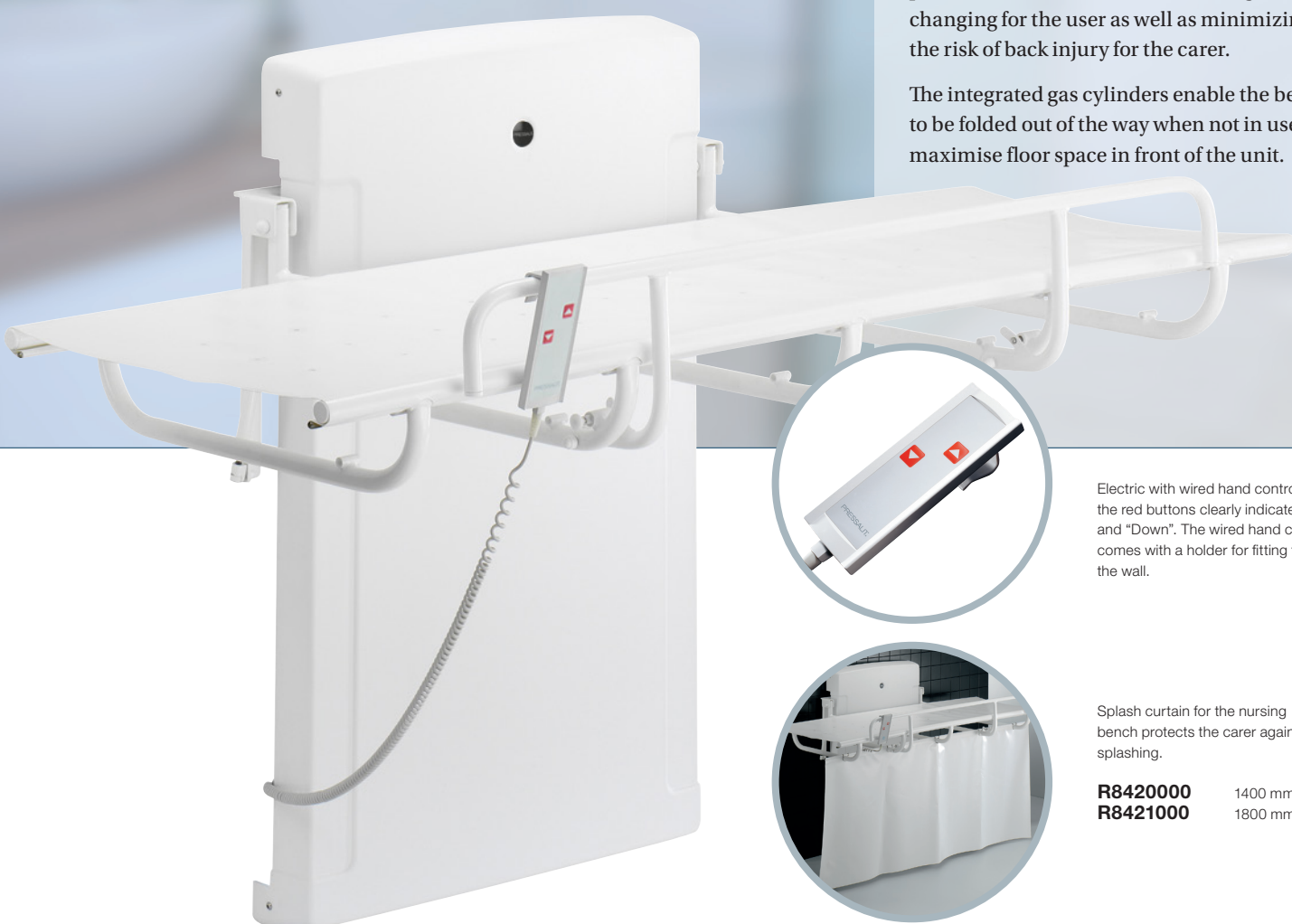
Provides safety for the user.
Can easily be folded up or down.

Nursing Bench 1000

The 1000 series is a range of quality nursing benches with PVC coated canvas stretchers, suitable for a wide range of applications in public or private places.

Carers can easily set the height of the bench, enabling them to obtain the correct working position. This ensures safe showering and changing for the user as well as minimizing the risk of back injury for the carer.

The integrated gas cylinders enable the bench to be folded out of the way when not in use to maximise floor space in front of the unit.



Electric with wired hand control – the red buttons clearly indicate “Up” and “Down”. The wired hand control comes with a holder for fitting to the wall.



Splash curtain for the nursing bench protects the carer against splashing.

R8420000	1400 mm/55"
R8421000	1800 mm/70"

Materials: The bench is made from practical and durable PVC canvas which is phthalate free. The frame is Rilsan coated steel.

Maximum load: 150 kg/330 lbs

Colour: 000 White



Nursing bench - adjustable height

- R8400000-93** Electric nursing bench, 1400 mm/55"
- ◀ **R8401000-93** Electric nursing bench, 1800 mm/70"
- R8402000-93** Electric nursing bench, with safety rail, 1400 mm/55"
- R8403000-93** Electric nursing bench, with safety rail, 1800 mm/70"

When mounted at the recommended height, the height of the nursing bench can be adjusted from 500 mm/20" to 900 mm/35" mm above floor.

Incl. wired hand control.



Safety rail

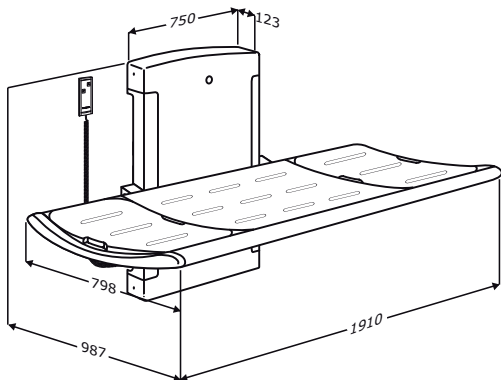
- R8410000** Length 1400 mm/55", for retro-fitting on nursing benches R8400000-93 and R8401000-93.

Provides safety for the user.

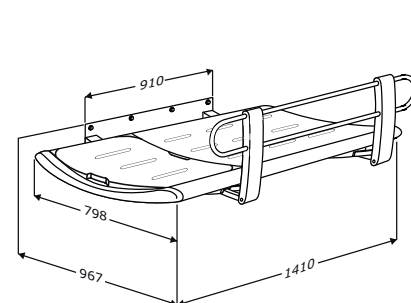
Dimensioned drawings

Nursing Bench 3000

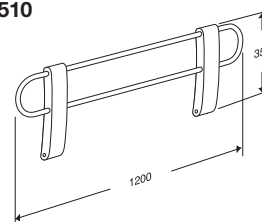
▼ R8520021
R8516021
R8539021
R8534021



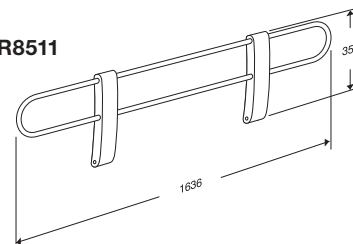
R8508021
R8503021
R8528021
▼ R8523021



R8510

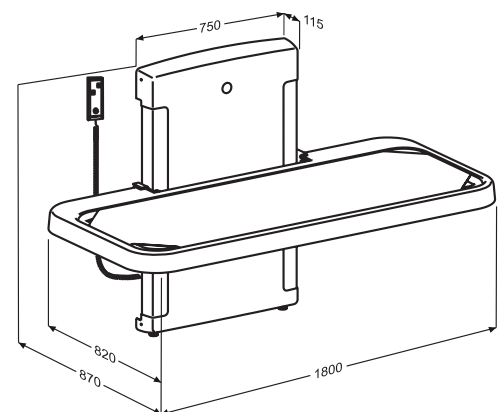


R8511

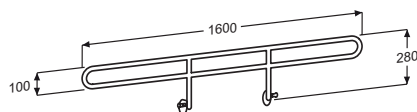


Nursing Bench 2000

▼ R8468000-93
R8478000-93

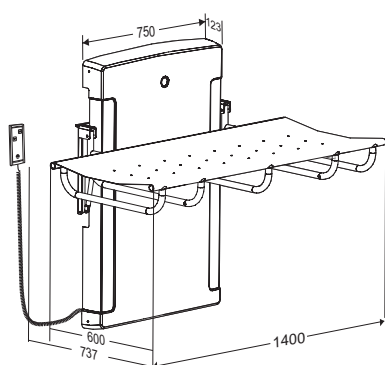


RB2290

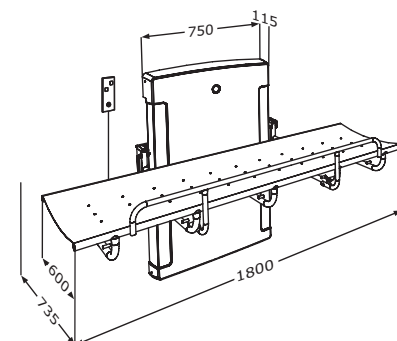


Nursing Bench 1000

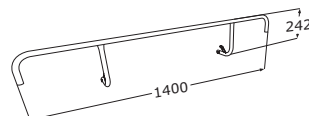
▼ R8400000-93
R8402000-93



R8401000-93
▼ R8403000-93



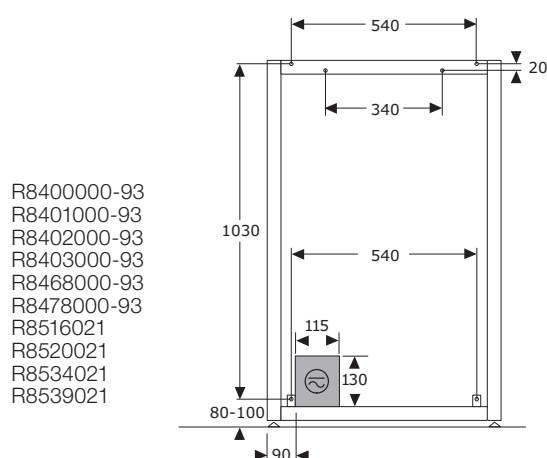
R8410000



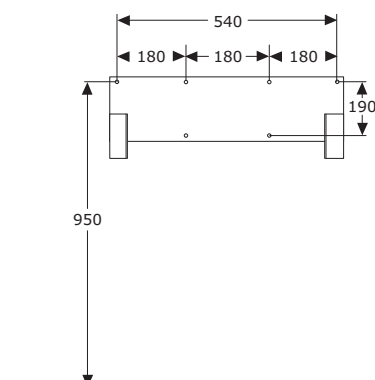
Mounting and accessories

Mounting

Fixing bolts for solid walls are included.



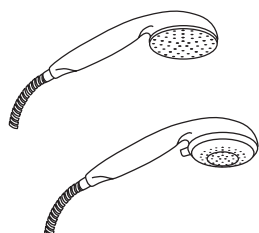
R8400000-93
R8401000-93
R8402000-93
R8403000-93
R8468000-93
R8478000-93
R8516021
R8520021
R8534021
R8539021



R8503021
R8508021
R8523021
R8528021

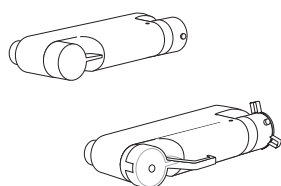
Accessories

RT610 / RT611



Shower head
RT610: One spray mode
RT611: Three spray mode

RT640 / RT641



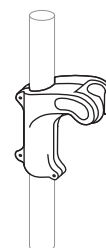
Shower mixer
RT640: With thermostat
RT641: With thermostat and extra long handles.

RT018 / RT024 / RT036



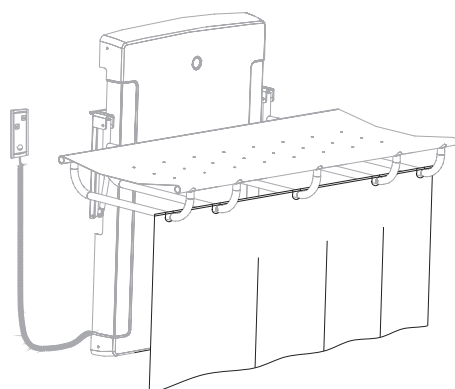
Grab bar
RT018xxx: 457,2 mm/18"
RT024xxx: 610,0 mm/24"
RT036xxx: 914,4 mm/36"
Available in: white, anthracite, red and dark blue

RT600



Showerhead holder
For vertical handrail: RT042/RT118/
RT119/RT136/RT138
Available in: white, anthracite, red and dark blue

R8420000 / R8421000



Splash curtain
R8420000: Suitable for nursing bench R8400000-93 and R8402000-93
R8421000: Suitable for nursing bench R8401000-93 and R8403000-93

PRESSALIT[®] care

Reduced functionality need not limit a person's development. For more than 35 years, the keep living philosophy has been a guiding principle for Pressalit Care's development of flexible kitchen and bathroom solutions for people with disabilities.

Thanks to its research-based knowledge, Pressalit Care is a market leader within specialist kitchen and bathroom solutions and today provides consultancy to customers worldwide.

An underlying respect for the individual and his or her possibilities is also reflected in the company's relationship to society at large and the local community. At Pressalit, Corporate Social Responsibility (CSR) is deeply rooted in the company's strategy and values and guides all parts of the organisation.

Pressalit Care's head office is located in Denmark.

www.pressalit.com

Pressalit A/S
Pressalitvej 1
8680 Ry
Denmark
Tel.: +45 8788 8788
Fax: +45 8788 8789
E-mail: pressalit@pressalit.com

International Sales Department
Pressalitvej 1
8680 Ry
Denmark
Tel.: +45 8788 8777
Fax: +45 8788 8669
E-mail: sales@pressalit.com

Pressalit Inc. North America
51 Forest Hills Drive
P.O. Box 1624
East Dennis
MA 02641
USA
Tel.: 508 364 3804
E-mail: pressalitinc@pressalit.com

Scan to see
our website

