



## Ingenious bathroom solutions – now and in the future

THE INNOVATIVE TRACK SYSTEM MAKES IT POSSIBLE TO:

- ▮ Adjust equipment vertically and horizontally
- ▮ Improve small and poorly designed bathrooms
- ▮ Maximise space efficiency

*Well-being and job satisfaction come naturally when interior design at care institutions meets the needs of users and relatives, as well as the working conditions for carers.*

*This brochure provides an insight into Pressalit Care's work with users and helpers, as well as those who have the financial and managerial responsibility in connection with building or renovating homes for people with impaired functionality. Among other things, we will look at the:*

- ▮ Advice we can offer throughout the entire project process, from planning to implementing a functional bathroom;
- ▮ Areas which are important to have in focus in order to ensure a well-functioning bathroom;
- ▮ Solutions which have to meet the needs of both users and helpers on a daily basis; and
- ▮ Results which are achieved in connection with implementing our solutions.

Our approach to the task can be summarised in two words:

keep living



**Respect, sympathetic insight and understanding the many considerations that lead to choosing a specific solution are the starting points for our entire development. Our work results in a high degree of flexibility – for everyone.**

*Products subject to minor technical modifications and design deviations. E.&O.E.*

## Consultancy

### Planning

Turnkey consultancy on the functional bathroom takes the form of a needs analysis as well as complying with work environment rules and other current legislation.



**Did you know that: Bathrooms for people with impaired functionality must be optimised in relation to conventional bathrooms to ensure adequate space for the user, mobility aids as well as any carer?**

## Presentation of solutions

Design proposals in relation to space requirements are based on the room's users and staff. Demonstrations of the solutions' functionality take place in our 1:1 test centre.

## Technical specifications

We supply consultancy on installing solutions and supply drawings for use with layout as well as needs specifications in relation to fitting.\*

## Quotations

We draw up quotations and parts lists for the specific solution.

## Implementation

We provide a review of the solution at the final installation, as well as guidance in correct use and maintenance.

*\* Find AutoCAD models (dwg) as well as installation guides at [www.pressalincare.com](http://www.pressalincare.com) under Products.*

# Morewood Centre Alfreton Park Alfreton, Derbyshire



## The challenge

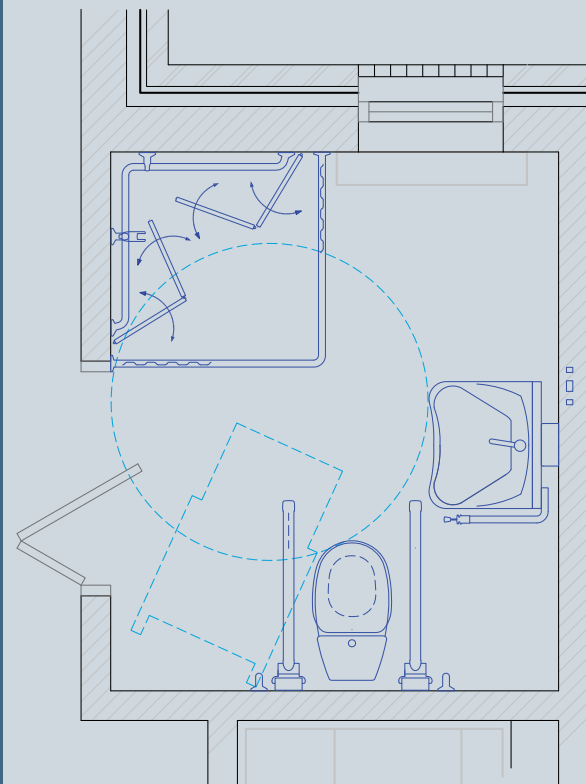
To design a suite of bathrooms capable of complying with the needs of up to a total of 43 respite residents staying from 1 night to two weeks at the Morewood Centre, a newly built community respite home in Derbyshire. The new centre and its facilities provide short stay accommodation for adults with learning difficulties and a wide range of special needs. In some cases, bathrooms must allow for the use of mobility aids and provide space and ease of movement for wheelchair users and their carers. A high resident turnover rate calls for flexible bathroom products that can be easily adjusted by the staff to suit individual user needs.

## The solution

Allowing the 43 regular residents to benefit from the very latest advances in flexible bathrooms, height adjustable, ergonomic washbasins, toilets, hand rails and hinged support arms were installed in 11 bathrooms and shower rooms in the Morewood Centre. Two of the assisted bathrooms were fitted with the innovative Pressalit Care track system, which allows for items such as the washbasin to be horizontally adjusted and the shower seat to be moved away to give carers better access.

## The effect

The new bathrooms are adjustable to meet different user requirements and designed to allow independent as well dependent use. The flexibility of the solutions allows the care personnel to adapt the bathrooms quickly and easily according to the individual needs of the residents staying at any one time. The bathrooms provide a secure and comfortable environment benefiting both user and carer and make the centre fully accessible to people with a range of disabilities. Pressalit Care's bathroom products support the efforts made to enhance the residents' self confidence and increase their skills for independent living.





The Morewood Centre in Alfreton is a purpose-built community respite and care centre for adults with learning disabilities offering short-stay accommodation for up to 43 residents at any one time.



Specialist bathrooms help our residents retain their self-esteem.

Our centre helps residents develop skills for independent living as well as offering much needed respite care.

The new bathrooms reinforce this ethos, allowing residents to increase their self-confidence through being able to use the facilities with increased independence.

Where the assistance of a carer is still required, the ability to adjust the position of the bathroom products to suit individual needs is an advantage.

To me it is obvious that well designed bathrooms enhance the lives of those who need it most.

**Mrs Jane Abrams**  
Manager, Moorewood Centre



# Flexible and unique solutions

Pressalit Care offers a complete system of flexible products. This unique flexibility can be ascribed to the track system, which makes it easy for both users and helpers to adapt the layout according to individual requirements. The system's ingenious design, choice of materials and details makes it easy to furnish a functional and beautiful bathroom without compromising on either quality or comfort.



Horizontal wall tracks make it possible to adjust the products horizontally. Using a vertical track, the height of the products can also be adjusted.



The flexible track system means the products can be positioned exactly as required, creating optimum working conditions for both users and carers.

” The key to a functional bathroom is a systematic assessment of the needs of the user and the carer as well as the room's possibilities.



R4760: Washbasin bracket with gas cylinder, height-adjustable 300 mm. Pictured here with ergonomic washbasin R2050 and the RT622 tap.



R7566: Shower chair 410. Height-adjustable 330 mm. It is possible to adjust the height of the seat and back rest independently of each other. Shown here with handrail/shower head with shower mixer bracket RT756.



R3548: Toilet support arm with horizontal wall track, height-adjustable 250 mm, length 850 mm.



R8518: Nursing bench, height-adjustable with electric motor and remote control.



## A healthy and long-term investment

At Pressalit Care, we believe in the importance of supplying solutions that, in addition to having the flexibility to meet changing needs, represent a sound investment – now and in future. The following describes some important parameters which constitute the most important arguments for investing in a flexible solution.

### Improved work environment

A Pressalit Care solution will enable you to reduce the incidence of twisting and lifting injuries among care staff when assisting users. This cuts costs in the form of fewer days off sick for care staff, and it gives users a greater sense of security when being assisted.

### Space-saving solutions

The flexibility created by the track solution makes it possible to optimise bathroom layouts. The individual elements in the shower, washbasin and toilet areas of the bathroom can be moved in relation to each other, thereby creating the space which is necessary to ensure optimum conditions and space for the carers, mobility aids etc.

### Fewer changes needed

In many places – at nursing homes, hospitals and homes for the elderly etc. – the bathrooms are used by many different users. With a Pressalit Care track system installed, it is possible to easily and quickly change the layout without major structural alterations.

### Increased independence

Thanks to the unique flexibility which allows the layout to be adapted to users' needs, it is possible to increase the degree of independence in the bathroom. This saves staff costs, and the enhanced flexibility means that each bathroom can be used by several users without compromising functionality.

# PRESSALIT<sup>®</sup> CARE

## Pressalit A/S

Pressalitvej 1  
8680 Ry  
Denmark  
Tel.: +45 8788 8788  
Fax: +45 8788 8789  
E-mail: [pressalit@pressalit.com](mailto:pressalit@pressalit.com)

## Pressalit plc

100 Longwater Avenue  
Green Park  
Reading RG2 6GP  
United Kingdom  
Tel.: +44 844 880 6950  
Fax: +44 844 880 6951  
E-mail: [uk@pressalit.com](mailto:uk@pressalit.com)

*Pressalit Care is a leader in supportive and assistive equipment for persons with physical disabilities. The philosophy is that impaired mobility need not limit a person's life. Our solutions for kitchens and bathrooms take this fundamental idea down to the smallest detail.*

*We offer 35 years of experience in the healthcare industry and have worldwide operations.*

*Pressalit Care has its head office in Denmark.*

[www.pressalit.com](http://www.pressalit.com)

CB1601 04.11

 keep living



Pressalit Care, Ry, Denmark

